

Social Workers Stand Up!
for Millions Each and every day!



Social work?

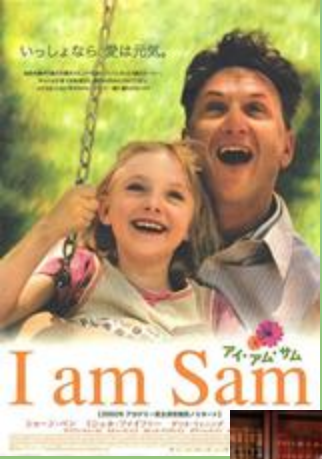
When asked at random to individuals:
“What is social work?”



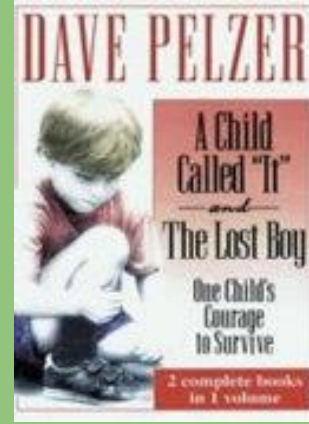
The most common response I received was- “they help people, they help the poor, they work in CPS, they work in Social Services...”

“How do you know this is what social workers do as a profession?”

The most common response from the majority was connected with something portrayed in media as to what they perceive the profession to be!



- Media does not always reflect & model social work in a positive and professional light.
- In fact, news often publishes stories of social workers failures and negative outcomes, not the triumph and success stories.



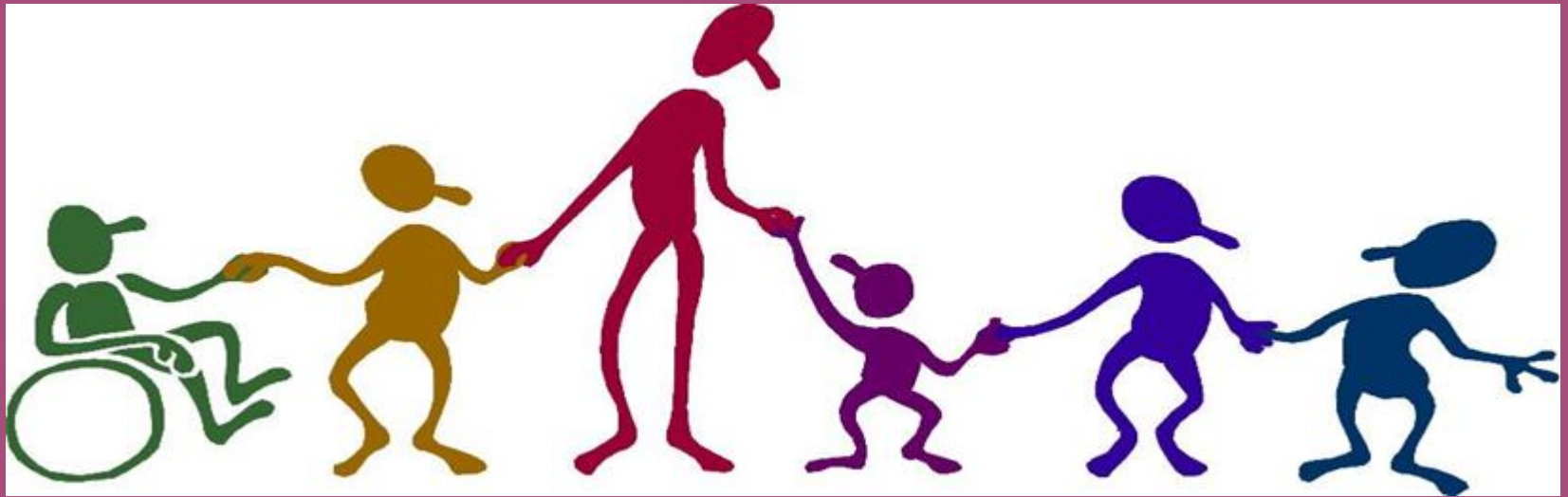
- In fact, the profession get's a negative stigma from media that depicts social workers as not professionals and at times unjust and unethical.



The
New York
Times



This is not true to our profession
and we must unify and
Stand Up!



NASW Mission of Social Work

The primary **mission** of the **social work** profession is to enhance human well-being and help meet the basic human needs of **ALL** people, with particular attention to the needs and empowerment of people who are vulnerable, oppressed, and living in poverty.





What is a social work?

Social work is a practice-based profession and an academic discipline that promotes **social** change and development, **social** cohesion, and the empowerment and liberation of people. Principles of **social** justice, human rights, collective responsibility and respect for diversities are central to **social work**.

It is the study of social problems and human behaviors.

-Social workers are people who care about people, who want to make things better, who want to relieve suffering, who want their **work** to make a difference. **Social work** is a profession devoted to helping people function the best they can in their environment.

Journey to become a Professional Social Worker



Education:

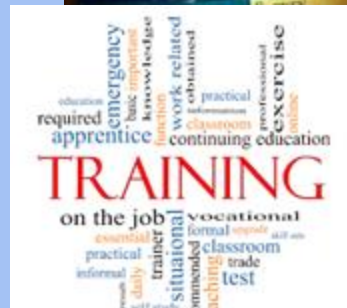
Go to a Council of Social Work Education (**CSWE**) accredited school

4+ years of college to obtain a Bachelors in Social Work (**BSW**)

5+ years of education to obtain your Masters in Social Work (**MSW**)

You can go on to get your **PHD** in social work

While earning your education you will also practice in the field as student interns in fields of practice (**Internships**)

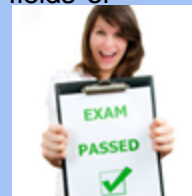


Professional License:

Licensure exam to be a Licensed Master's Social Worker (**LMSW**).

Maintaining your Licence by taking continuing education opportunities (**CEU's**), to keep your license and stay up to date with the best and current practices in the field.

After gaining experience and clinical hours under the supervision of a professional Licensed Clinical Social worker (**LCSW**) you can apply and take the Clinical Licensing exam to then become a LCSW.



While doing all of the above you also gain experience professionally working in the field, volunteering, and internships.

Commitment to being a **Lifetime learners**- CEU's, Trainings, conferences, workshops....

SPECIALTY DEGREE REQUIREMENTS			
Field/Specialty/Setting	Bachelor's	Master's	Doctorate
Children and Family Services	Blue		
Medical Social Work		Blue	
School Social Work		Blue	
Clinical Social Work		Blue	
Private Practice		Blue	
Administration/Policy		Blue	
College Professor of Social Work			Blue
Research			Blue

**Social Workers do not just
look at the case... we look
into the Cause!**

**A career that is
meaningful, challenging and
never boring!**

**It is both a science & an
Art.**

I'm a Social Worker

NOT

Because of what I do

*But because of my: Education,
Training, Values, Ethics, and
Licensure*

Role of social worker

- As a social worker we have many roles to be played among this community people.
- We must plan to improve their standard of living, their economic status, and life style.
- To create awareness among the public.
- To take their problems to notice of the government to take welfare measures.
- To create awareness among themselves in education, health, about their rights, etc.



Society does not understand the role and value of the profession of Social Work!

Not recognizing the diverse areas of practice in Professional Social Work that keep the world going!

The next few slides are dedicated to the diverse areas of practice of the profession, but are not limited to...

Social Work in Higher Education: Student-Community Development

- Social Worker on a college campus
- Adjunct Faculty/Lecturer
- Field Education Director/Coordinator
- Field Liaison
- Director of Special Programs
- Program Director
- Department Chair
- Dean
 - Social Work Professor
 - Program development
 - Research and Grant Writing

School based and school-Linked Services

- School Social Worker
- After school program counselor
- Daycare or school readiness Program Worker
- Adult Literacy Program Worker
- Special Education Social Service Worker
- Administrator

Medical and healthcare

- Social workers in hospitals
- Emergency room Social Workers
- Director of Social Work
- Rehabilitation social worker
- Public Health social work
- Social worker in Family Planning
- Hospice Social Worker
- Palliative Care Social worker
- Home Health Social worker
- Patient Advocates/Navigator
- Health Care Policy Specialist
- Sexual Assault/Abuse Social worker

Aging and the elderly population (gerontological)

- Adult Protective Services (APS)
 - Social worker in Adult Day Center
 - Residential Care Case Manager
 - Career in psychogeriatrics
 - Geriatric Case Manager
 - Research
 - City, county, state or federal in policy & program planning...
 - lobbyists & Advocacy Organizations to improve programs, interventions and conditions for older adults

Poverty & Homelessness

- Income Assistance Caseworker
- Employment Counselor
- Program Manager/Director
- Shelter Social Worker
- Case manager
- Research/grant writing
- Poverty Advocate
- Education workshops/classes
- Support Groups

Who would have thought of so many areas of practice both on a micro and Macro level...



But wait...

Employment example:

National Poverty & Research Center

Long Island Coalition for the Homeless

National Coalition for the Homeless

THERE IS MORE :)

International Social work and Human Rights

Immigration Policy Advocate

Disaster relief worker

U.S.- Based Immigrant, refugee, & Asylee
Resettlement Worker

Career with United Nations or UNICEF

Human Rights Worker

Director of Program

International Development Worker

Crisis Intervention

- Careers in Disaster and Emergency Management
- Case Managers
- Volunteer Coordinators
- Suicide Prevention
- Family Violence Counselor
- Policy Advocate
- Hotline Crisis Counselor

Examples: FEMA, Red Cross, Peace Corps, Domestic Violence Agencies, SANE centers and Hotlines

Mental health & Addiction

- Clinical Social Worker
- Treatment Coordinator
- Social Work with Groups
- Substance Abuse Intervention Social Worker
- Mental Illness Substance Abuse Coordinator
- Employee Assistance Worker
- Military Social worker
- Mental Health Advocacy

Psychiatric Social Worker

- LCSW Private or public therapist
- Outpatient or inpatient
- Psychotherapist
- Educator
- Jail setting
- CPEP Social worker
- Child Psych Social Worker

Bear with me...

There is still MORE areas in which Professional Social Workers are committed to the helping profession!

Fervent to create a more just and equal society!
Where there is equal opportunity with a balance of peace and security



Social Work Criminal Justice and Legal Arena

- Probation Officer (Adult or Juvenile Justice System)
- Parole Officer
- Correctional or Detention Officer
- Correctional Treatment Specialist
- Juvenile Justice Counselor
- Gang Prevention Counselor
- Licensed Clinical Social Worker
- Careers in Restorative Justice
- Program Counselor
- Director of Program
- Treatment Coordinator

Social work and law

- Law Guardian
- Attorney
- CPS Lawyer
- Family and Child Advocacy
- Family Court Social Worker
- Victim Services Specialists
- Mediation and Conflict Resolution
- Custody Evaluator
- Mental Health Evaluator
- Mitigation Specialist
- Forensic Social Work in Juvenile Justice
- Forensic Social Work

Community and Political Social Action

Lobbyist

Campaign Worker

Legislative Aide

Field Organizer

Lead Manager

Policy Analyst/Researcher

Advocacy Organization

Legislator or Public Official

Administrator

Community Planner

Community Developer

Community Organizer

Other Social Work Jobs

- Library social work/ case management
- Animal Assisted Social Work
- Journalist or Novelist
- Filmmaker
- Artist
- Human resources
- Career mediation and conflict resolution
- Grant Writer
- Administrator
- Executive Director
- Program Manager
- Organizational Consultant
- Outreach Coordinator
- Public relations and Media relations



Social work has no limit for professional employment & development



Strong people
Stand up for themselves,
But stronger people
Stand up for others.
- Unknown



**Social Workers
STAND UP for
Millions EVERYDAY!!!**

Social work is a profession and a social science
committed to the pursuit of social justice, quality
of life and to the development of the full potential

SOCIAL WORKER

of each individual, group or society. Social Workers
problem solve, work in research, practice or both.
They are organized into local, national, continental
and international professional bodies.

We as students Stand Up!

- Through our own Education
- Through language and dialogue
- Following & Modeling the NASW code of ethics and 6 core Values
- Following Council of Social Work Education's (CSWE) core competencies
- Self Awareness
- Cultural diversity, awareness and sensitivity
- Volunteerism
- Internships
- Extra learning Opportunities
- Conferences, Workshops & Trainings
- Good work life balance
- Through Technology and Social Media
- Actively voting & Writing Our Congressmen
- Research and educate ourselves and others to be conscious and current with current laws and policies
- Advocate and fight for our profession to be recognized as any other profession
- Lobbying, Rallies and Protests
- Advocating for more social workers
- Advocating, Empowering & Supporting
- Educating
- Being an ally
- Being a social change Agent
- Networking
- Practicing self Care



unique
expected
important
ways
behavior
power
positive
lead
way

unique
task
style
emotions
influence
group
intelligence
position
society

skills
others
authority
decision
research

ability
team
developing
leadership
individual
formal
organization
charisma

person
leader
coaching
different
Mentoring
effective
situation

style
model
performance
employee
work

Social work students Stand up!

The picture can't be displayed.

The picture can't be displayed.



The picture can't be displayed.

The picture can't be displayed.





vevo

The picture can't be displayed.

The picture can't be displayed.

SBU MSW and BSW students
Volunteering at Open Door
Exchange



SBU Students volunteering for a
Tobacco Free University

BSW student service
project

The picture can't be displayed.



Bake Sale and T-shirt sale for SBU Advocacy club to
raise funds for Advocacy and Action Day for
Disability Justice




Toy drive for Stony Brook Children's
Hospital- BSW SW students



SBU students and Professor at Capitol in Albany for Legislation Education & Advocacy Day (LEAD)-

Lobbying for Raising the Age of youthful offenders and Social Work Loan Forgiveness Spring 2016

 The picture can't be displayed.



Stony Brook School of Social Welfare annual Advocacy day: Spring 2016

"Economic Injustice = the destruction of the American Dream: Social Work Advocacy for Economic Justice."

Social Change Agents

Social Workers stand up for most vulnerable and oppressed populations who face violence, marginalization, exploitation, powerlessness, and cultural imperialism.

WE BELIEVE PEOPLE ARE RESILIENT AND CAN CHANGE WHEN

THEY HAVE THE KNOWLEDGE, WILL & RESOURCES!!

Social Workers as professional social change agents...

“Positive social change” refers to involvement in activities that improve the lives of individuals and communities locally and around the world. Social workers Give, Advocate and Volunteer!

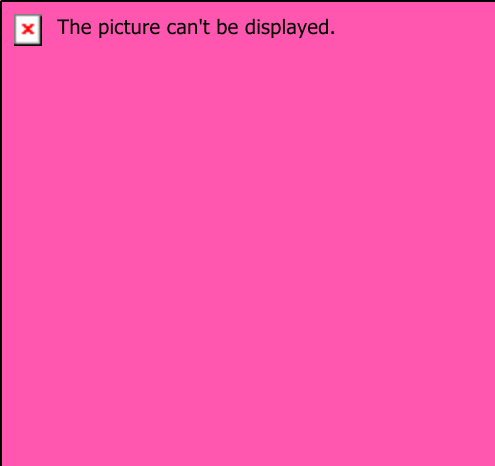
Social Workers empower, educate and lead by example! Social Workers provide guidance and resources to all in hopes of their clients also Standing up and advocating for themselves and all around them. To transform and find leadership within themselves to become social change agents around the world...



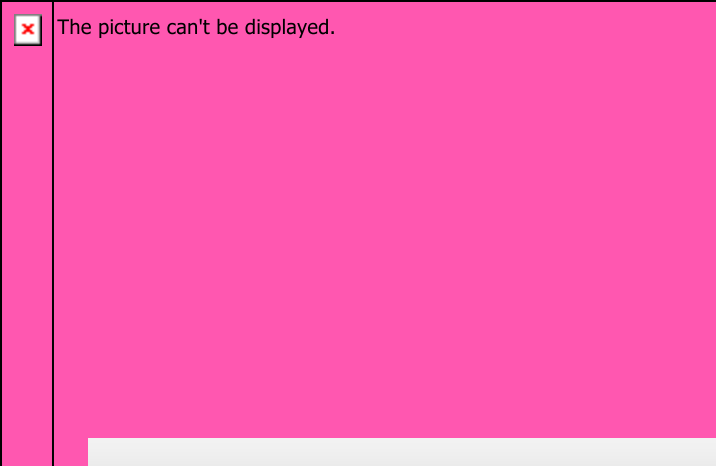
I am a

basic agent for positive change - a client
advocating, injustice fighting, therapy
providing, systems testing, family
preserving, social conscious raising,
datacollecting, rights protecting, child
defending, staff developing, human
assisting, strengths focused, social
rights championing, ego lending, and
crisis intervening teacher, facilitator,
listener, encourager, supporter, and
leader with professionalism, integrity,
concern, empathy, values, love, trust,
honesty, and warmth -

Social Worker



The picture can't be displayed.



The picture can't be displayed.

SW interns at Community Housing Initiative

Rally at the white house for Rights for Recovery



Women's March 2017



SW students at Women's March 2017



Advocating for Undocumented Immigrants

The picture can't be displayed.



SBU Students Rikers Island Correctional facility: Touring with deputy commissioner & interviewing inmates, program counselors and Social workers

The picture can't be displayed.

The picture can't be displayed.

Empowering, Supporting and building relationships with our peers, professors and mentors

Student Liaisons for NASW suffolk Division Chapter at State Division tour

Social Workers

FEED THE HUNHGRY

SHELTER THE HOMELESS

PROTECT THE CHILDREN

ADVOCATE FOR THE INFIRM

COUNSEL THE DISTRESSED

EMPOWER THE VICTIMS

RESEARCH BEST PRACTICES

INFORM GOVERNMENT

PROTECT THE VULNERABLE

CHALLENGE DISCRIMINATION



Formerly Incarcerated and now MSW student at Columbia University Fighting Social Injustice in the Criminal Justice System at Multiple Events!

Amazing testimony and voice!

The picture can't be displayed.

**SBU School of Social Welfare-
Undergraduate Social Work Alliance**

The picture can't be displayed.

**Outreach to Flint Michigan during
Water Crisis- Past Senior BSW SBU
students**



**Helping create a local
Community Garden-
Columbia Masters Student**



**Back to School Drive Service
Project**



**Food not Bombs- PHD
SBU student**

Stand up and Fight For Our Profession!!!

For it to be recognized as any other profession like in Law and Medicine!!!

To increase Social workers around our nation!

So We as students, developing into the profession, *advancing our Knowledge, Values & Skills can continue* working on Micro & Macro levels of practice.

Directly or indirectly working with and for individuals, families, and communities pushing forwards for positive social and political change!!

Stand up!

For us as students to continue to address social problems at the local, national and international levels!

Standing up to fight against -Discrimination, Oppression & Human Rights Violations

Working together & unifying to achieve social and Economic Justice

Ready to take on the world and create a more Just and Fair Society where everyone has Access to equal opportunity!



“In these times of difficulty, we Americans everywhere must and shall choose the path of social justice, the path of hope, and the path of love towards our fellow man”

FDR, October 2, 1932



Stony Brook University Social
Welfare BSW student:
Hope Moore

My name is Hope Moore. I am a current BSW student at Stony Brook University. I currently hold a 3.89 GPA. I am graduating with honors in May 2017 from Golden Key Club International Honor Society and Phi Alpha Honor Society, the Phi Theta Chapter. I have been able to maintain this all while balancing a life of working full time, being a mother to an amazing eight-year-old boy and staying actively involved and engaged in the opportunities to grow into the profession around me. I am patiently awaiting my response for graduate school as an advanced standing candidate.

It has been an honor and privilege to be awarded the opportunity to be a part of the NASW steering committee. Which recently this year after being opened up to student members, I joined the NASW and the Suffolk Steering Committee last spring of 2016. Shortly after I was appointed the role of BSW stony brook student liaison by the Committees Division Director. This experience, being a student member of the committee, has matured my understanding of the social work profession and gave my life and the profession a new perspective. Throughout my time as a BSW student and student member, I have been able to take a step back to reassess the microcosm of the world surrounding me. The multitude of diverse social problems that challenge the world daily, which is what draw me to this profession in the first place. I believe that I was called to this profession to advocate, empower and educate not only my clients but as a student, I am called to do the same for my colleagues and professionals around me.

My experiences as a student member have revealed the importance of community efforts to collectively solve the diverse social issue and its causations. Working on this committee amongst professionals, seasoned and new to the field, has shown me what teamwork is all about. Reflecting on being a student, I have seen firsthand professionals with the passion for change. Professionals carrying out and reflecting the mission of social work while building relationships. Professionals with competence, who are honest, unifying to fight for social justice, serving their communities at all levels of practice, empowering educating and supporting their clients and being a voice for those unvoiced, in hopes of empowering others to become their own leaders and advocating for not only themselves but for those clients and populations they serve.

I have been able to not only learn and build new skills but have been able to practice and advance my knowledge values and skills that I am developing at the BSW level. Some of which are advancing my networking skills and most importantly the experience and empowerment from the members of this committee have brought out the leadership role within myself. I have learned to give back and by using my privilege I can do just that. In this case, my education and awareness - I can plant seeds for change and make a difference. In hopes of creating future leaders/social change agents as well. That believe in themselves, recognizing even during the waves of change that they will find their way and be led by professionals to something amazing. I hope to work on a professional interdisciplinary team, just as the one that I serve on as a student member of this committee when looking for my professional career job in the field after graduate school.

I agree to attend the 2017 Annual Awards Brunch Ceremony for NASW on April 22nd, 2017 at the Brentwood Country Club. I also agree to continue to be an active student member of the NASW Suffolk division steering committee. I plan to continue to not only uphold this position but to expand and work on a team for the NASW Suffolk chapter reach its full potential.

My scholarship submission is a google slides presentation. I originally was going to make a compiled video. However, all odds were against me in successfully completing this task. Which as a developing social worker tends to happen in the field quite often. So... I had to improvise and work with what I had, in the short time frame I now had left, to revamp my submission. I created a slideshow to portray social work as a profession. My google presentation was made to depict what social workers do and the diverse areas of practice social workers are employed and needed.

Social workers serve, give their time, dedication and professional skills they have obtained through education, experience and professional development day in and out. The slideshow was compiled with pictures provided by diverse SW students of what social work means to them and how they stand up in the field each day as students developing into the field. Students giving voice and changing societal negative views on social work into the positive one we truly are. It portrays student's efforts and hard work in the profession. Students modeling the six core values in our NASW's code of ethics and reflecting the mission of social work in all we do. I hope to continue advocating to increase the number of social workers and for our profession and our license to be recognized just as other licensed professions.